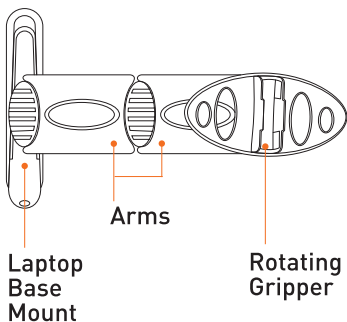
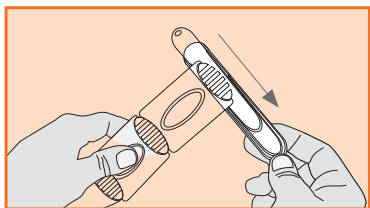


● ● ● FLipCARD™system

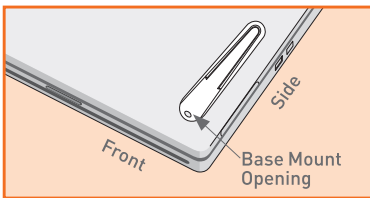
Attaching your FlipBOOK™ with the VersaTL Laptop Arm and Base Mount



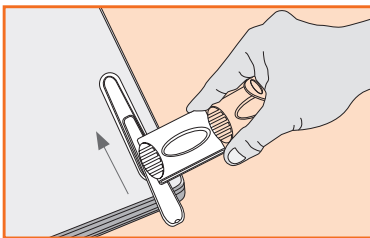
- 1 Clean and dry the surface where the Laptop Base Mount will be attached.



- 2 Slide the bottom half of the base mount off.
- 3 Peel the adhesive backing from the bottom of the base mount.



4 Position the Base Mount on the top of your laptop in the right or left corner 1/2" from the front and side. The Base Mount opening will face the front. Apply firm pressure for 30 seconds. Wait 24 hours for the adhesive to set.



5 Slide the top part of the base mount with the arms and Rotating Gripper into the Base Mount slot.

6 Snap the VersaTL Hinge (with the FlipBOOK attached) into the Gripper. Rotate the arms for optimal viewing of your FlipBOOK.

 **FlipCARD™**system

U.S. PATENT NO. 7,823,856

www.flipcards.com 585.713.1733